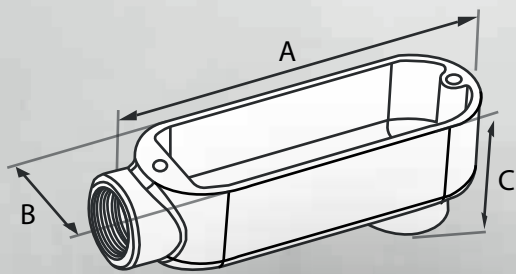


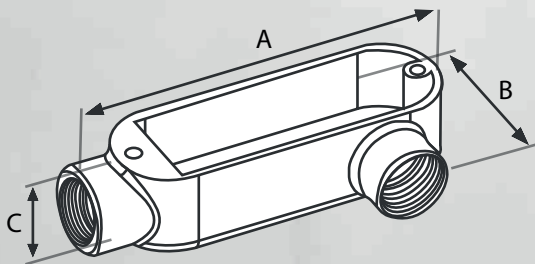
CAJA CONDULEX **LB** SET NPT UL STANDART



MODELOS	TAMAÑO COMERCIAL	DIMENSIONES x UNIDAD A x B x C
LB 00001	1"	5.819 x 1.747 x 2.630 mm
LB 00002	2"	9.850 x 3.123 x 4.310 mm
LB 00003	3"	12.583 x 4.459 x 4.450 mm
LB 00004	4"	15.661 x 5.590 x 5.800 mm
LB 001/2	1/2"	4.359 x 1.330 x 2.060 mm
LB 003/4	3/4"	4.972 x 1.552 x 2.370 mm
LB 011/2	1 1/2"	7.807 x 2.491 x 3.750 mm
LB 011/4	1 1/4"	7.795 x 2.491 x 3.500 mm
LB 021/2	2 1/2"	12.673 x 4.444 x 4.450 mm

MODELOS	CAJA MASTER	DIMENSIONES CAJA MASTER	PESO EN GRAMOS	PESO NETO	PESO BRUTO
LB 00001	50	39 x 33 x 23	267.8 gr	1,339.00	1,382.75
LB 00002	10	39 x 33 x 23	10	924.30	963.68
LB 00003	1	-	-	-	-
LB 00004	1	-	-	-	-
LB 001/2	100	39 x 33 x 19	146.8 gr	734.00	757.94
LB 003/4	100	39 x 33 x 26	191.3 gr	2,295.60	2,369.42
LB 011/2	20	39 x 33 x 21	571.1 gr	571.10	595.97
LB 011/4	20	39 x 33 x 21	526.1 gr	526.10	550.97
LB 021/2	1	-	-	-	-

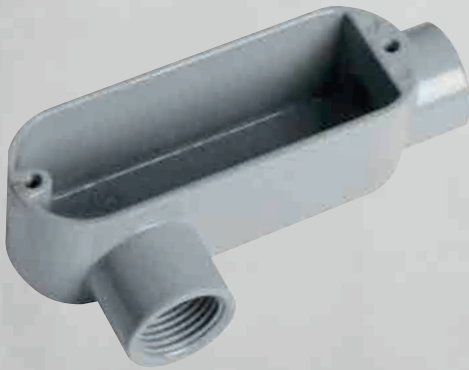
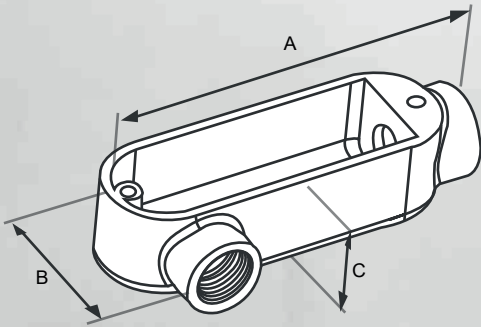
LL CAJA CONDULEX SET



MODELOS	TAMAÑO COMERCIAL	DIMENSIONES x UNIDAD A x B x C
LL 00001	1"	5.819 x 2.427 x 1.894 mm
LL 00003	3"	12.583 x 5.898 x 4.448 mm
LL 00004	4"	15.661 x 7.681 x 5.559 mm
LL 001/2	1/2"	4.359 x 2.015 x 1.412 mm
LL 003/4	3/4"	4.972 x 2.299 x 1.655 mm
LL 011/2	1 1/2"	7.807 x 3.412 x 2.685 mm
LL 011/4	1 1/4"	7.795 x 3.391 x 2.685 mm
LL 021/2	2 1/2"	12.673 x 5.878 x 3.984 mm

MODELOS	CAJA MASTER	DIMENSIONES CAJA MASTER	PESO EN GRAMOS	PESO NETO	PESO BRUTO
LL 00001	50	39 x 33 x 23	267.8 gr	133.90	138.28
LL 00003	1	-	-	-	-
LL 00004	1	-	-	-	-
LL 001/2	100	39 x 33 x 19	136.8 gr	273.60	283.17
LL 003/4	100	39 x 33 x 26	206.3 gr	1,031.50	1,062.26
LL 011/2	20	39 x 33 x 19	136.8 gr	273.60	283.17
LL 011/4	20	39 x 33 x 21	511.9 gr	153.57	161.03
LL 021/2	1	-	-	-	-

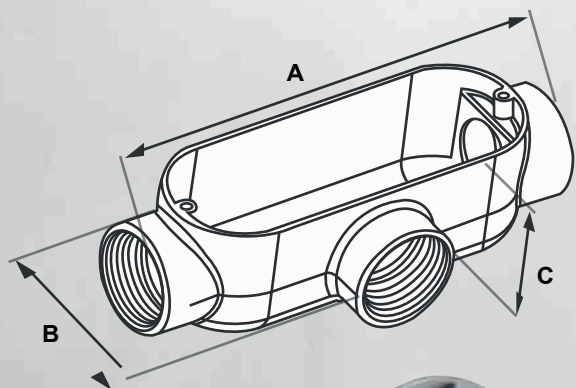
LR CAJA CONDULEX SET



MODELOS	TAMAÑO COMERCIAL	DIMENSIONES x UNIDAD A x B x C
LR 00001	1"	5.819 x 2.427 x 1.894 mm
LR 00002	2"	9.850 x 4.082 x 3.425 mm
LR 00003	3"	12.583 x 5.898 x 4.448 mm
LR 00004	4"	15.661 x 7.681 x 5.559 mm
LR 001/2	1/2"	4.359 x 2.015 x 1.412 mm
LR 003/4	3/4"	4.972 x 2.299 x 1.655 mm
LR 011/2	1 1/2"	7.807 x 3.412 x 2.685 mm
LR 011/4	1 1/4"	7.795 x 3.391 x 2.685 mm
LR 021/2	2 1/2"	12.673 x 5.878 x 3.984 mm

MODELOS	CAJA MASTER	DIMENSIONES CAJA MASTER	PESO EN GRAMOS	PESO NETO	PESO BRUTO
LR 00001	50	39 x 33 x 23	272.8 gr	1,309.44	1,351.44
LR 00002	10	39 x 33 x 29	947.2 gr	142.08	152.48
LR 00003	1	-	-	-	-
LR 00004	1	-	-	-	-
LR 001/2	100	39 x 33 x 19	136.8 gr	752.40	778.73
LR 003/4	100	39 x 33 x 23	216.3 gr	2,595.60	2,648.10
LR 011/2	20	39 x 33 x 21	534.6 gr	160.38	167.84
LR 011/4	20	39 x 33 x 21	564.4 gr	282.20	294.63
LR 021/2	1	-	-	-	-

CAJA CONDULEX T SET NPT UL STANDART

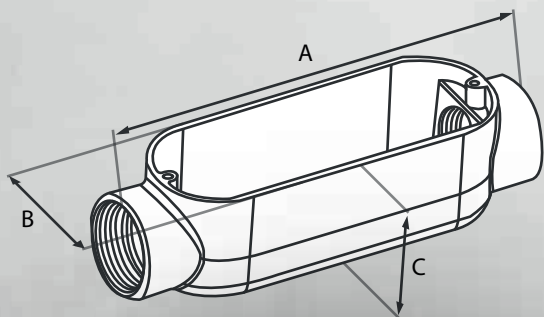


MODELOS	TAMAÑO COMERCIAL	DIMENSIONES x UNIDAD A x B x C
T 00001	1"	6.467 x 2.523 x 1.894 mm
T 00002	2"	10.232 x 4.089 x 3.425 mm
T 00003	3"	13.067 x 5.850 x 4.448 mm
T 00004	4"	16.236 x 7.648 x 5.559 mm
T 001/2	1/2"	4.825 x 2.089 x 1.412 mm
T 003/4	3/4"	5.646 x 2.241 x 1.655 mm
T 011/2	1 1/2"	8.268 x 3.460 x 2.685 mm
T 011/4	1 1/4"	8.268 x 3.450 x 2.685 mm
T 021/2	2 1/2"	13.102 x 5.850 x 3.984 mm

MODELOS	CAJA MASTER	DIMENSIONES CAJA MASTER	PESO EN GRAMOS	PESO NETO	PESO BRUTO
T 00001	40	39 x 33 x 21	282.8 gr	1,696.80	1,771.40
T 00002	10	39 x 33 x 29	901.6 gr	180.32	194.19
T 00003	1	-	-	-	-
T 00004	1	-	-	-	-
T 001/2	100	39 x 33 x 23	146.8 gr	1,761.60	1,814.10
T 003/4	50	39 x 33 x 19	246.3 gr	3,620.61	3,761.35
T 011/2	10	39 x 33 x 21	556.1 gr	556.10	605.83
T 011/4	10	39 x 33 x 21	626.1 gr	626.10	675.83
T 021/2	1	-	-	-	-

CAJA CONDULEX

SET NPT UL STANDART

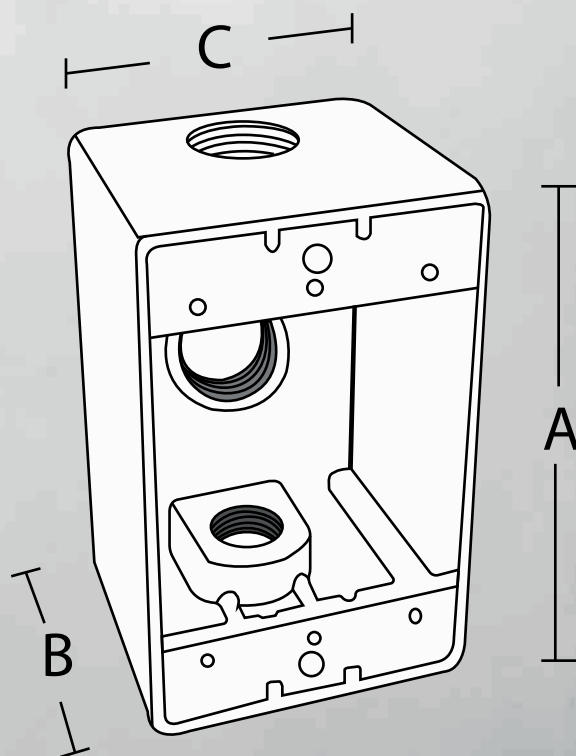
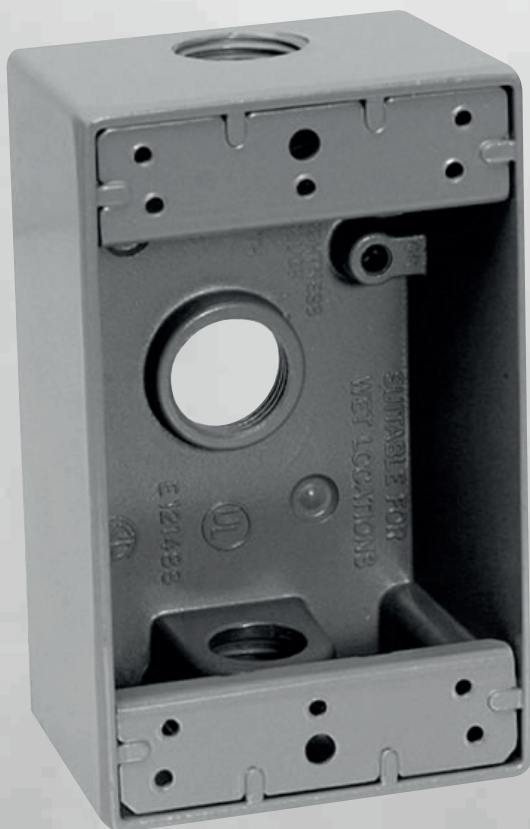


MODELOS	TAMAÑO COMERCIAL	DIMENSIONES x UNIDAD A x B x C
C 00001	1"	6.467 x 1.747 x 1.894 mm
C 00002	2"	10.232 x 3.123 x 3.425 mm
C 00003	3"	13.067 x 4.459 x 4.448 mm
C 00004	4"	16.236 x 5.590 x 5.559 mm
C 001/2	1/2"	4.825 x 1.330 x 1.412 mm
C 003/4	3/4"	5.646 x 1.552 x 1.655 mm
C 011/2	1 1/2"	8.268 x 2.491 x 2.685 mm
C 011/4	1 1/4"	8.268 x 2.491 x 2.685 mm
C 021/2	2 1/2"	13.102 x 4.444 x 3.984 mm

MODELOS	CAJA MASTER	DIMENSIONES CAJA MASTER	PESO EN GRAMOS	PESO NETO	PESO BRUTO
C 00001	50	39 x 33 x 23	277.8 gr	555.60	573.10
C 00002	10	39 x 33 x 21	960 gr	19.20	20.19
C 00003	1	-	-	-	-
C 00004	1	-	-	-	-
C 001/2	100	39 x 33 x 19	136.8 gr.	656.64	679.62
C 003/4	100	39 x 33 x 26	206.3 gr.	2,475.60	2,549.42
C 011/2	20	39 x 33 x 21	501.3 gr.	200.52	210.47
C 011/4	20	39 x 33 x 19	503.6 gr.	125.90	131.88
C 021/2	1	-	-	-	-

HC3H CAJA CONDUIT ALUMINIO

CAJA MODULAR TIPO CONDULEX DE ALUMINIO FUNDIDO



MODELOS	CARACTERÍSTICA	MEDIDAS A x B x C
HC3H1/2"	RECTANGULAR 3 HUECOS	37 x 24.5 x 27 cm
HC3H3/4"		

HC5H CAJA **CONDUIT ALUMINIO**

CAJA MODULAR TIPO CONDULEX DE ALUMINIO FUNDIDO



MODELOS	CARACTERÍSTICA	MEDIDAS A x B x C
HC5H1/2"	CUADRADO 5 HUECOS	37 x 24.5 x 27 cm
HC5H1/2"	RECTANGULAR 5 HUECOS	
HC5H1/2"	CUADRADO 5 HUECOS	
HC5H1/2"	RECTANGULAR 5 HUECOS	

HCTAPA CAJA **CONDUIT ALUMINIO**

CAJA MODULAR TIPO CONDULEX DE ALUMINIO FUNDIDO



MODELOS	CARACTERÍSTICA	MEDIDAS A x B x C
HCTAPA	RECTANGULAR	39 x 13x 26.5 cm
HCTAPA	TAPADOBLE CUADRADO	39 x 13x 26.5 cm

HR5H3 CAJA
CONDUIT ALUMINIO
CAJA MODULAR TIPO CONDULEX DE ALUMINIO FUNDIDO



MODELOS	CARACTERÍSTICA
HR5H3/4"	CIRUCLAR 5 HUECOS